

DAVID BIEDENBENDER

I'M DOWN

from Beck Hansen's *Song Reader*

for baritone, woodwind quintet, percussion, piano, and string quintet

BENT SPACE MUSIC

*I'm Down* was arranged for the Atlantic Chamber Ensemble.

Performance materials available from the arranger:  
 *davidbiedenbender@gmail.com*

Published by Bent Space Music  
[www.davidbiedenbender.com](http://www.davidbiedenbender.com)

© Copyright 2013 by David Biedenbender  
International copyright secured. All rights reserved.  
First printed February 2013.

David Biedenbender (b. 1984)

# INSTRUMENTATION

Flute  
Oboe  
B<sup>b</sup> Bass Clarinet  
Bassoon  
F Horn

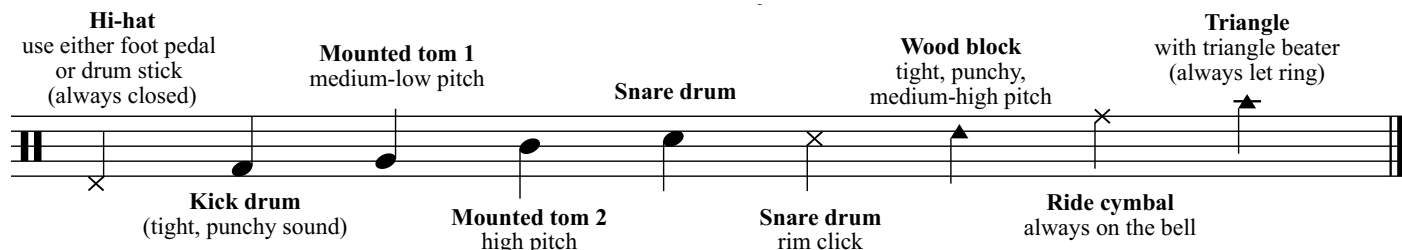
Percussion  
Piano

Solo Baritone

Violin 1  
Violin 2  
Viola  
Violoncello  
Double Bass

## Percussion List:

Hi-hat  
Ride cymbal  
Snare drum  
2 mounted toms  
Kick drum (with pedal)  
Triangle  
Woodblock (small)



**Duration: ca. 3:30**

## PROGRAM NOTE

In writing this arrangement of Beck's "I'm Down," I wanted to use the original melody and shuffle groove in their simple, unaltered form, and then pull apart bits and pieces of the accompaniment into little fragments. My intent was to capture the cheerful irony of the melody juxtaposed with the content of the lyrics in an accompaniment that is fun but kind of quirky and weird—imagine daydreaming while feeling kind of down and letting your mind wander through surreal, even goofy, ideas, images, and sounds.

## NOTE TO THE PERFORMERS

The piece should *feel* very much like a traditional shuffle. All of the attacks and releases should be very precise, as each note is part of a pointillistic musical groove.

Score in C

for the Atlantic Chamber Ensemble  
**I'M DOWN**  
from Beck Hansen's Song Reader

BY BECK HANSEN  
ARRANGED BY DAVID BIEDENBENDER

Very precise but with a steady groove, as if Webern did the shuffle ♩ = 108

Musical score for the first system of instruments. The score is in 12/8 time and C major. The instruments are Flute, Oboe, Bass Clarinet in B $\flat$ , Bassoon, Horn in F, Percussion, and Piano. The Flute part starts with a melodic line marked *mp*. The Bassoon part has a melodic line starting with a *p* dynamic. The Percussion part has a steady groove with a *p* dynamic. The Piano part has a melodic line with dynamics *mp* and *sfz*, and includes a 15<sup>ma</sup> trill. The Oboe, Bass Clarinet in B $\flat$ , and Horn in F parts are silent.

Very precise but with a steady groove, as if Webern did the shuffle ♩ = 108

Musical score for the second system of instruments. The instruments are Violin 1, Violin 2, Viola, Violoncello, and Double Bass. All violin and viola parts are silent. The Violoncello part has a melodic line starting with a *pizz.* dynamic and *p* dynamic, and includes a *l.v.* marking. The Double Bass part has a melodic line starting with a *pizz.* dynamic and *p* dynamic, and includes a *l.v.* marking.

I'M DOWN

5

Fl.

Ob.

B. Cl.

Bsn.

Hn.

Perc.

Pno.

Bar. Solo

Vln. 1

Vln. 2

Vla.

Vc.

Db.

*mp*

*p*

*sim. (always let triangle ring)*

*mp*

*pizz.*

*mp*

Detailed description: This is a page of a musical score for the piece 'I'M DOWN'. The score is for a full orchestra and includes parts for Flute (Fl.), Oboe (Ob.), Bass Clarinet (B. Cl.), Bassoon (Bsn.), Horn (Hn.), Percussion (Perc.), Piano (Pno.), Baritone Solo (Bar. Solo), Violin 1 (Vln. 1), Violin 2 (Vln. 2), Viola (Vla.), Violoncello (Vc.), and Double Bass (Db.). The page is numbered '2' in the top left and '5' at the top of the first staff. The music is written in 3/4 time. The Flute part has a melodic line starting in the fourth measure with a dynamic marking of *mp*. The Bassoon part has a melodic line starting in the second measure with a dynamic marking of *p*. The Percussion part has a triangle part starting in the second measure with the instruction *sim. (always let triangle ring)*. The Piano part has a melodic line starting in the first measure with a dynamic marking of *mp*. The Viola part has a pizzicato line starting in the first measure with a dynamic marking of *mp*. The Baritone Solo part is silent. The Violin 1 and Violin 2 parts are silent. The Violoncello and Double Bass parts have a melodic line starting in the second measure. The Oboe and Bass Clarinet parts are silent.

10 Verse 1

9

Fl.

Ob.

B. Cl.

Bsn.

Hn.

Perc.

Pno.

Bar. Solo

*mp plainly, sad*

I'm down \_\_\_\_\_ I'm down and this town is a nuisance \_\_\_\_\_ It'll put your

10 Verse 1

Vln. 1

Vln. 2

Vla.

Vc.

Db.

17 20 Bridge 1

Fl. (fall off pitch) *pp* *f* *pp* *f* (slap tongue with key click)

Ob. *pp* *f*

B. Cl. *pp* *f*

Bsn. *pp* *f*

Hn. *pp* *f*

Perc. *mp* *mf* *p*

Pno. *f*

Bar. Solo *mp* getting silly

flu - ent in the haz-ards of love... Feed a war - rant to a

20 Bridge 1

Vln. 1 *pp* *f* *p*

Vln. 2 *n.* *f* *pp* *f* *p*

Vla. *pp* *f* *mp*

Vc. *f* *pp* *f*

Db. *f* *mp*

I'M DOWN

21

(articulate given consonants with pitched air, synchronize with baritone)

Fl. *f* → *t* *p* < *f* *pp*

Ob.

B. Cl.

Bsn.

Hn.

Perc.

Pno.

Bar. Solo *mf*  
bil - ly — goat      Fix the spell ing on a su - i - cide note      A get - well card from a

Vln. 1

Vln. 2

Vla. 5

Vc. *pizz.* *p*

Db.



I'M DOWN

28 Verse 2

25

Fl.

Ob.

B. Cl.

Bsn.

Hn.

Perc.

Pno.

Bar. Solo

Vln. 1

Vln. 2

Vla.

Vc.

Db.

*f* *p* *f* *mp*

*p* *f*

*pp* *f*

*pp* *mp* *f*

*p* *f*

*mf* *p*

*pp* *f*

*f* vulgar, growly, confused, with a screwed up nose and wandering eyes

ho - ly\_\_\_ ghost to a beg - gar who smells like a rose\_\_\_

28 Verse 2

*f* *arco* *f*

*arco* *p* *f*

*arco* *ff*

*f*

*f*

33

Fl.

Ob.

B. Cl.

Bsn.

Hn.

Perc.

Pno.

Bar. Solo

Vln. 1

Vln. 2

Vla.

Vc.

Db.

*p*

*angry?*

sky - scrap - er cit - y be - low her I wan-na feed my heart to a co - bra 'Cause

*pizz. b.e.*

*mp*

I'M DOWN

40 Bridge 2

37

Fl. (fall off pitch) *pp*  $\curvearrowright$  *f* (slap tongue with key click) *f*

Ob. *pp*  $\curvearrowright$  *f*

B. Cl. *pp*  $\curvearrowright$  *f*

Bsn. *p*  $\curvearrowright$  *mf* *pp*  $\curvearrowright$  *f*

Hn. *pp*  $\curvearrowright$  *mf* *pp*  $\curvearrowright$  *f*

Perc. (on bell of ride cymbal, quietly) *mf* *p*

Pno. *p*  $\curvearrowright$  *f* *mp*

Bar. Solo *lighter* *mp*  
 noth - ing ev - er hap - pens to me — Like a bless - ing — dis

40 Bridge 2

Vln. 1 *pp*  $\curvearrowright$  *f* *mp*

Vln. 2 *n*  $\curvearrowright$  *f* *pizz.* *pp*  $\curvearrowright$  *f* *mp*

Vla. *pizz.* *pp*  $\curvearrowright$  *f* *mp*

Vc. *f* *arco* *pp*  $\curvearrowright$  *f* *mp* *pizz.*

Db. *f* *mp*

I'M DOWN

45

Fl. *mp* *mf* G.P. (in time)

Ob. *p* *f* G.P.

B. Cl. *pp* *f* G.P.

Bsn. *pp* *mp* *f* G.P.

Hn. *p* *f* G.P.

Perc. *f* *sfz* G.P.

Pno. *pp* *f* G.P.

Bar. Solo *f* G.P.  
keep an - y birds I can't keep my arms a-round you

Vln. 1 *arco* *f* *8<sup>va</sup>* G.P.

Vln. 2 *arco* *p* *f* G.P.

Vla. *arco* *ff* G.P.

Vc. *f* G.P.

Db. *f* G.P.

**49 Instrumental**

Fl. *f*

Ob. *f*

B. Cl. *f heavy, plodding*

Bsn. *f heavy, plodding*

Hn.

Perc. *mf*

Pno. *f*

Bar. Solo

**49 Instrumental**  
pizz. *f*

Vln. 1 *f*

Vln. 2 *n. f*

Vla. *pizz. f*  
*arco*

Vc. *f heavy, plodding*  
*arco*

Db. *f heavy, plodding*

I'M DOWN

53

Fl.

Ob.

B. Cl.

Bsn.

Hn. *solo* ② (second valve harmonic series) *ff* brazenly awkward, off-kilter

Perc. *mf*

Pno.

Bar. Solo

Vln. 1 *b.e.*

Vln. 2 *n. f*

Vla.

Vc.

Db.

Detailed description: This page of a musical score, numbered 14, is titled "I'M DOWN". It features a multi-staff arrangement for a symphony orchestra. The score begins at measure 53. The instruments listed on the left are Flute (Fl.), Oboe (Ob.), Bass Clarinet (B. Cl.), Bassoon (Bsn.), Horn (Hn.), Percussion (Perc.), Piano (Pno.), Baritone Solo (Bar. Solo), Violin 1 (Vln. 1), Violin 2 (Vln. 2), Viola (Vla.), Violoncello (Vc.), and Double Bass (Db.). The Flute part has a measure number "53" above the first staff. The Horn part includes a "solo" marking with a circled "2" and the instruction "(second valve harmonic series)". A dynamic marking of "ff" (fortissimo) is placed below the Horn staff with the descriptive text "brazenly awkward, off-kilter". The Percussion part starts with a "mf" (mezzo-forte) dynamic. The Violin 2 part has a dynamic marking of "n. f" (normal fortissimo) with a hairpin. The score is written in 12/8 time and includes various musical notations such as rests, notes, and dynamic markings across the measures.

I'M DOWN

57

Fl.

Ob.

B. Cl.

Bsn.

Hn.

Perc.

Pno.

Bar. Solo

Vln. 1

Vln. 2

Vla.

Vc.

Db.

*n.*

*f*

*b.e.*

65 Verse 3

Fl. *mp*

Ob. *mp*

B. Cl. *mp*

Bsn. *mp*

Hn.

Perc. *p*

Pno. *mp*

Bar. Solo  
down I'm down and this town is a back - drop

65 Verse 3

Vln. 1

Vln. 2 *n.* *f*

Vla. *mp*

Vc. *mp*

Db. *mp* *pizz.*



68

Fl.

Ob.

B. Cl.

Bsn.

Hn.

Perc.

Pno.

Bar. Solo

Vln. 1

Vln. 2

Vla.

Vc.

Db.

A back - road o - ver a road - block with a deb - u - tante

*n. f*

*n. f*

*b.e.*

*b.e.*

Detailed description: This page of a musical score, numbered 18, is titled "I'M DOWN". It features a Baritone Soloist and a full orchestra. The score is in 6/8 time and consists of 68 measures. The instruments are arranged in the following order from top to bottom: Flute (Fl.), Oboe (Ob.), Bass Clarinet (B. Cl.), Bassoon (Bsn.), Horn (Hn.), Percussion (Perc.), Piano (Pno.), Baritone Soloist (Bar. Solo), Violin 1 (Vln. 1), Violin 2 (Vln. 2), Viola (Vla.), Violoncello (Vc.), and Double Bass (Db.). The Baritone Soloist's part includes the lyrics: "A back - road o - ver a road - block with a deb - u - tante". The score includes various musical notations such as rests, notes, and dynamic markings like *n. f* and *b.e.*. The page number "68" is located at the top left of the first staff.

72

Fl.

Ob.

B. Cl.

Bsn.

Hn.

Perc.

Pno.

Bar. Solo

Vln. 1

Vln. 2

Vla.

Vc.

Db.

*p* *pp* *mf* *mf* *n. f*

in a tank - top who's tell - ing me how to be free

77 Like a broken record

Musical score for 'I'M DOWN' starting at measure 76. The score includes parts for Flute (Fl.), Oboe (Ob.), Bass Clarinet (B. Cl.), Bassoon (Bsn.), Horn (Hn.), Percussion (Perc.), Piano (Pno.), Baritone Solo (Bar. Solo), Violin 1 (Vln. 1), Violin 2 (Vln. 2), Viola (Vla.), Violoncello (Vc.), and Double Bass (Db.). The key signature has one sharp (F#) and the time signature is 6/8. The score is divided into three measures, with measure numbers 76, 77, and 78 indicated at the start of each measure. Dynamics include forte (f) and mezzo-forte (mf).

79

Fl.

Ob.

B. Cl.

Bsn.

Hn.

Perc.

Pno.

Bar. Solo

Vln. 1

Vln. 2

Vla.

Vc.

Db.

*sfz*

(rim shot)

*sfz*

*arco (ricochet)*

*sfz*

*arco (ricochet)*

*sfz*

*p* freely, like a weak sheep bleat...trailing off

*solo arco sul tasto*

87

Fl.

Ob.

B. Cl.

Bsn.

Hn.

Perc.

Pno.

Bar. Solo

Vln. 1

Vln. 2

Vla.

Vc.

Db.

Learn to love what you can't get rid of before it gets rid of you

*mp* *p* *mf* *mf* *mf* *mf* *mf*

*opening up*

92 Coda

91

Fl. *mp*

Ob.

B. Cl.

Bsn. *p*

Hn.

Perc. *pp* *p*

Pno. *p* *mp* *sfz* *mp* *sfz*

Bar. Solo *p*  
I'm

92 Coda

Vln. 1 *p* *pizz.* *p*

Vln. 2

Vla. *mf*

Vc. *p*

Db. *p*

95

Fl.

Ob.

B. Cl.

Bsn.

Hn.

Perc.

Pno.

Bar. Solo

Vln. 1

Vln. 2

Vla.

Vc.

Db.

down

I'm

*sfz*

*mp*

*15<sup>ma</sup>*

6/8

12/8

99

Fl. *mp*

Ob.

B. Cl. *p*

Bsn. *p*

Hn.

Perc.

Pno. <sup>(45)</sup> <sup>15<sup>ma</sup></sup>

Bar. Solo *down*

Vln. 1

Vln. 2

Vla.  $\frac{12}{13}$   $\frac{12}{8}$

Vc.

Db.



103

Fl.

Ob.

B. Cl.

Bsn.

Hn.

Perc.

Pno.

Bar. Solo

Vln. 1

Vln. 2

Vla.

Vc.

Db.

*pp*

*p*

(15)